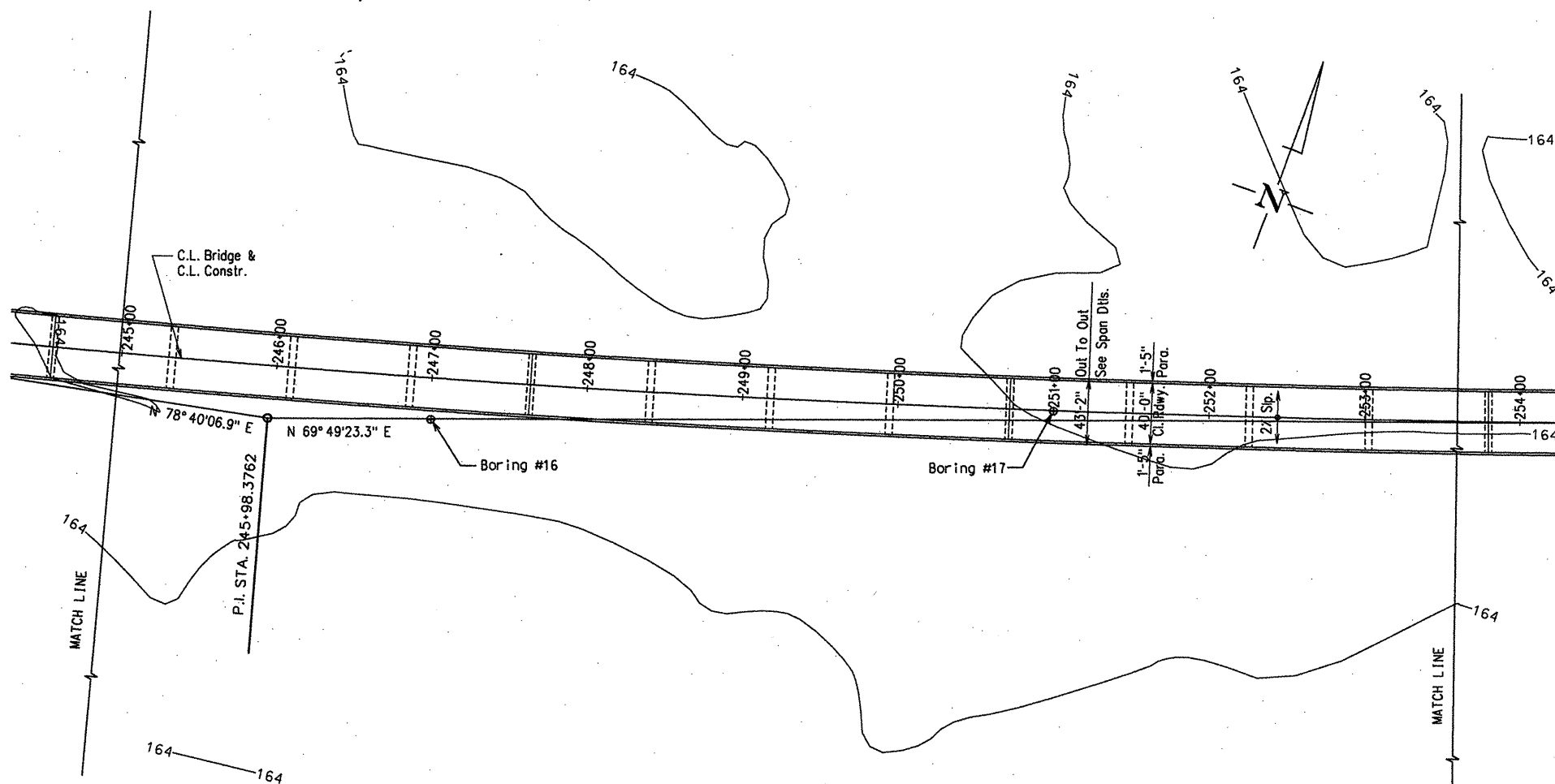


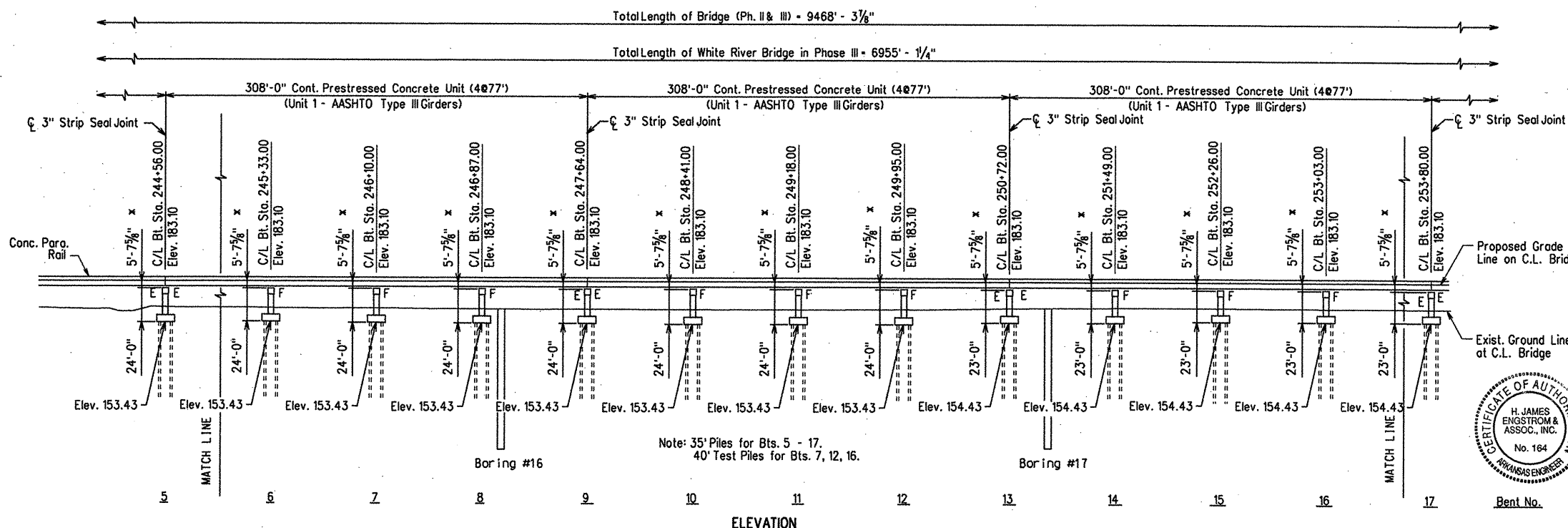
PI = 245+98.3762  
 Δ = 8° 50' 43.6234" LT.  
 D = 0° 29' 59.9931"  
 R = 11459.2000'  
 T = 886.3095'  
 L = 1769.0970'  
 PC = 237+12.0667  
 PT = 254+81.1637

For R/W Data - See Rdwy. Plans

DATE REVISED	DATE FILMED	DATE REVISED	DATE FILMED	FED. ROAD DIST. NO.	STATE	FED. AID PROJ. NO.	SHEET NO.	TOTAL SHEETS
				6	ARK.			
				JOB NO.		110395	15	203
				06830	LAYOUT		47013	



PLAN



Note: 35' Piles for Bts. 5 - 17.  
 40' Test Piles for Bts. 7, 12, 16.

\* Top of Deck at C.L. Bridge and C.L. Bent to Low End of Cap

Strip Seal Joints are designated as "X" Strip Seal Joints where "X" represents the "A" dimension at 60 degrees F as shown in the table on dwg. no. 47095 - 47099.

Note: See dwgs. no. 47024 - 47028 for Soil Borings & additional data.  
 See dwg. no. 47023 for General Notes.  
 See dwg. no. 47020 for Hydraulic Data Tables.



ALTERNATE NO. 1

OUT OF BRIDGE OVER WHITE RIVER  
 (SHEET 2 OF 9)  
 WHITE RIVER STR. & APPRS.  
 (CLARENDON) (PH. III) (F)  
 MONROE COUNTY  
 ROUTE 79 SEC. 13

ARKANSAS STATE HIGHWAY COMMISSION  
 LITTLE ROCK, ARK.

Engstrom / Modjeski and Masters

DRAWN BY: LKD/TAD DATE: Sep. 10 FILENAME: b1103951-102.dgn  
 CHECKED BY: FS DATE: Sep. 10 SCALE: 1" = 50'-0"  
 DESIGNED BY: YO DATE: Sep. 10  
 BRIDGE NO. 06830 DRAWING NO. 47013

BRIDGE ENGINEER